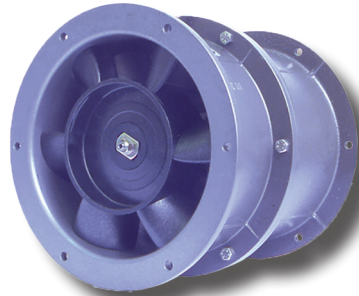


CHARACTERISTICS

Weight: 3,95 Kg / 8,73 Lb
 Housing in Aluminium
 Impeller in plastic
 L-10 life expectancy at 40°C: 25.000 hours
 Operating temperature range: -10 / +70 °C
 Storage temperature: -54 / +85°C
 Connection: Leads
 IP40



OPTIONS

- Speed sensor
- Other IP levels
- Salt spray protection
- Shocks and vibrations protection
- Marine application
- Wide temperature range
- Other voltages
- Safety switch
- Aluminium impeller
- NATO Codification (not on all part numbers, please consult the factory for more detailed information)

Part Number	Voltage V	Frequency Hz	Nb Phases	Airflow		Pressure		Nominal speed RPM	Noise level LP dBA	Nominal current A	Starting current A	power W	Capacitor µF
				l/s	CFM	mm H. o	inch H. o						
86CD116DC13	220	50	3	126,0	267,12	28	1,10	2850	63	0,28	0,88	54	
	380	50	3	126,0	267,12	28	1,10	2850	63	0,16	0,51	54	
	220	60	3	148,0	313,76	38	1,50	3250	66	0,26	0,84	71	
	380	60	3	148,0	313,76	38	1,50	3250	66	0,15	0,49	71	
	220	50	1	126,0	267,12	28	1,10	2850	63	0,29	0,79	54	3,2
	380	50	1	126,0	267,12	28	1,10	2850	63	0,17	0,46	54	1
	220	60	1	144,0	305,28	38	1,50	3250	66	0,34	0,76	71	3,2
	380	60	1	144,0	305,28	38	1,50	3250	66	0,20	0,44	71	1

