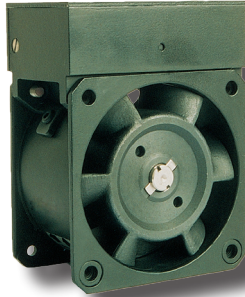


CHARACTERISTICS

Weight: 1 Kg / 2,21 Lb
 Housing in Aluminium
 Impeller in metal
 L-10 life expectancy at 40°C: 25.000 hours
 Operating temperature range: -25 / +70 °C
 Storage temperature: -40 / +70°C
 Connection: Leads
 Brushless DC motor
 IP41



OPTIONS

Speed sensor
 Alarm
 Other IP levels
 Salt spray protection
 Shocks and vibrations protection
 Marine application
 Wide temperature range
 Other voltages
 Others speeds

Part Number	Voltage	Voltage range	Airflow		Pressure		Nominal speed	Noise level LP	Nominal current	power
	V		l/s	CFM	mm H ₂ O	inch H ₂ O	RPM	dB(A)	A	W
82DBT05D6000	27	15V-32V	28,7	60,84	31,24	1,23	6800	58	0,60	16

